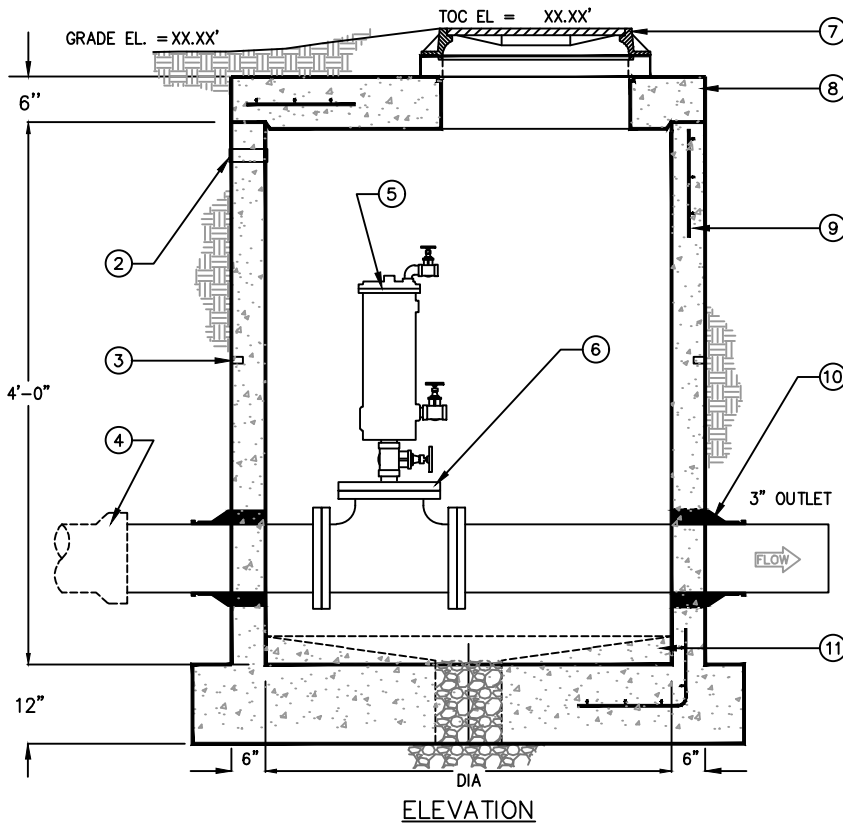


MODEL	MAX FORCE MAIN DIA	DIA
ARV-5	8"	5'-0"
ARV-6	16"	6'-0"
ARV-8	36"	8'-0"



KEYED NOTES		
MARK	QTY	DESCRIPTION
1	1	NAMEPLATE INDICATING: MFG: PARKUSA 888-611-PARK WWW.PARKUSA.COM MODEL: ARV-2 DATE MANUFACTURED
2	1	2" PVC CONDUIT ELECTRIC SLEEVE
3	1	LIFTING LUGS AS REQUIRED
4	1	TYPICAL PIPE BY OTHERS
5	1	AIR/VACUUM RELEASE VALVE
6	1	DIP REDUCING FLANGE FOR AIR VALVES SMALLER THAN 4"
7	1	32" DIA CAST IRON FRAME AND COVER
8	1	PRECAST CONCRETE SLAB TOP SEALED w/ PLASTIC FLEXIBLE GASKET MATERIAL
9	1	#4 REBAR @ 12" O.C.E.W. (1) MAT FOR TOP SLAB BAR BENDING & PLACEMENT SHALL COMPLY w/ LATEST ACI STANDARDS
10	1	RESILIENT PIPE CONNECTION PER ASTM-C923 (TYP-2)
11	1	GROUT SLOPE TO DRAIN

SPECIFICATIONS

CONCRETE: DESIGN STRENGTH OF 4500 PSI AT 28 DAYS. UNIT IS OF MONOLITHIC CONSTRUCTION AT FLOOR, FIRST STAGE OF WALL AND BAFFLE WITH SECTIONAL RISER TO REQUIRED DEPTH.

REINFORCEMENT: GRADE 60 REINFORCED WITH STEEL REBAR CONFORMING TO ASTM A615 ON REQUIRED CENTERS OR EQUAL. STRUCTURAL DESIGN IS BASED ON AASHTO HS-20 LOADING.

C.I. CASTINGS: MANHOLE FRAMES, COVERS OR GRATES ARE MANUFACTURED OF GREY CAST IRON CONFORMING TO ASTM A48-76 CLASS 35. MANHOLE SHALL HAVE 24 INCH INSIDE DIAMETER AND BE TRAFFIC DUTY.

ENGINEERING DATA

MANHOLE STATION IS STRUCTURALLY AND HYDRAULICALLY ENGINEERED CONFORMING TO UNIFORM PLUMBING CODE AND ASTM C-478.

FIELD EXCAVATION AND PREPARATION SHALL BE COMPLETED PRIOR TO DELIVERY OF THE SEPTIC TANK. USE DIMENSIONAL DATA AS SHOWN.

CONTRACTOR TO FIELD VERIFY ALL ELEVATIONS.



© ParkUSA. ALL RIGHTS RESERVED.



AIR RELIEF VALVE ASSEMBLY MODEL ARV

PM	PC	DRN	ENG	DWG. NO.	REV.
				ARV-1	A
DATE	03/2023				